

The Artist



**Floyd
Newsum**

Mr. Newsum graduated in 1973 from the Memphis Academy of Arts earning a bachelors degree in Fine Arts and in 1975 his masters of Fine Arts from the Memphis Academy of Arts. He first started showing his work in solo and group exhibitions in 1975 and has had over 100 shows, including Florida, Texas, Pennsylvania, Tennessee, Alabama, North Carolina, Georgia, Arkansas, Illinois, Louisiana, Virginia, and Russia. Some of his professional services and honors are: Honorable mentions in the Assistance League of Houston Celebrates Texas Artists 2000, Artists Fellowship Award 1999, Cultural Arts Council of Houston/Harris County, Member of the Contemporary Arts Museum

Education Study Committee 1996, Paper presented to SCMLA, Houston on "The Museum and African-American Art" 1996, and Chaired panel "Multi-cultural Art Organizations" for the Texas Association of Museums, San Antonio, Texas 1992. Mr. Newsum is currently living in Houston, Texas.

Museum of Fine Arts, Houston, Texas

The Museum of Fine Arts, Houston, the first art museum in Texas, began as the Public School Art League, founded March 24, 1900. A century later, the MPAH has become a multifaceted institution consisting of: two gallery buildings, the Audrey Jones Beck Building and the Caroline Wiess Law Building; the Lillie and Hugh Roy Cullen Sculpture Garden; two house museums, Bayou Bend Collection and Gardens an American decorative arts collection, and Rienzi, the museum's center for European decorative arts; and the Glassell School of Art, which includes the Studio School and the Junior School. The museum's encyclopedic collection of over 40,000 works of art from cultures around the world ranks as the largest and most outstanding in the Southwest. Highlights include the John A. and Audrey Jones Beck Collection of Impressionist and Post-Impressionist Art, Baroque and Renaissance are from the Sarah Campbell Blaffer Foundation, the Hogg Brothers Collection of Remington paintings and sculpture, and the Glassell Collection of African Gold.

The Museum of Fine Arts, Houston
1001 Bissonnet (at Main)
Houston, Texas 77005
713-639-7300
<http://www.mfah.org/>



Amazing Art Adventures

Episode 2 Color

Program Overview

Discusses color theory along with showing the color wheel.

The artist talks and demonstrates the use of gouache on paper. He begins working with tracing paper to transfer his drawing. He mixes gouache with brushes and applies the paint to the paper. African symbols like the chicken, dog, bird, fish, and snake designs, that he uses with lines to create shapes and forms contrast with color light and dark, warm and cool, and intensity of a color. The artist discusses preliminary drawings and color study. He talks about his life and shows his paintings "Fractured Landscape in Red" and "Blue Nile."

A trip to the Museum Of Fine Arts, Houston includes the artists: Monet, Cassatt, Heda, and an unknown Italian painter.



VOCABULARY

ABSTRACT
ANALOGOUS COLORS
COLOR
COLOR WHEEL
COMPLEMENTARY COLORS
CONTRAST
COOL COLORS
DESIGN
ENLIGHTEN
EXTERIOR
FORMS
GOUACHE
HUES
IMAGE
IMPRESSIONIST
INTENSITY
INTERIOR
INTERMEDIATE COLORS
LINES
MONOCHROMATIC
PALETTE
PATTERN
PRELIMINARY DRAWING
PRIMARY COLORS
REALISTIC
SECONDARY COLORS
SHAPE
SYMBOLIC
WARM COLORS

Glossary of vocabulary definitions in back of this resource guide.

ELEMENTS AND PRINCIPLES COVERED

Elements	Principles
color	pattern
form	contrast
shape	
line	
forms	

MEDIUMS USED

water color

MATERIALS & TOOLS

pencil
water color paper
tracing paper
brushes
gouache
pallet

WATER COLOR PAINTING LESSON PLAN WITH COLOR

Materials Needed

#2 pencil	water colors
drawing paper	paper towels
eraser	rulers
water containers	compass
brushes	masking tape
	drawing boards

(1) Lower level project:

Have students tape down their paper to the board. After this has been done they can start drawing shapes on their paper using the compass and rulers. When their picture has been drawn they can then select to use either warm or cool water colors to paint in the shapes. (See Illustration 2-1)

(2) Higher level project:

Students may draw a picture from a still life in the classroom or use calendar pictures to draw cars, flowers, landscapes, animals, and etc. After the picture is complete they will need to tape the picture down to the board. Now the student will select to use either warm or cool colors to paint their picture with. (See Illustration 2-2)

Teaching Idea Lay out a large sheet of paper, paint a light coat of field of color. Have the students use colored paints in a "Jackson Pollack" style to create an image. Inexpensive acrylic paints work well for this.

OTHER SUBJECTS IN THE VIDEO

Museum Of Fine Arts, Houston

The Windmill	by artist: Claude Monet
Water Lilies	by artist: Claude Monet
The Japanese Footbridge at Giverny	by artist: Claude Monet
Susan Comforting the Baby	by artist: Mary Cassatt
Banquet Piece With Ham	by artist: Willem Heda
The Meeting of Solomon and the Queen of Sheba	by artist: unknown

Teaching Idea Review Impressionist art with your students. Ask your students to create their own Impressionist art of a photograph.

THE NATIONAL STANDARDS OF CORE ABILITIES COVERED IN THE VIDEO

#1 through #7

Amazing Art Adventures

LESSON PLAN WITH COLOR ILLUSTRATIONS



Illustration 2-1 Lower level using cool colors

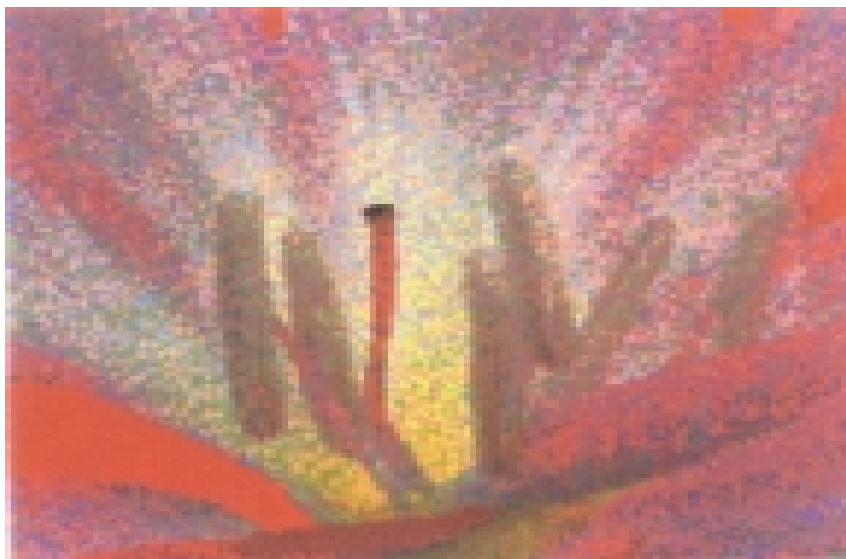


Illustration 2-2 Higher level using warm colors



